



# CONVENTUS CAGE™

3-DIMENSIONAL FRACTURE MANAGEMENT SYSTEM

PROXIMAL HUMERUS

## FULLY REMOVABLE

### BENCHTOP

- Successful Removals in Bone Simulated Models

### CADAVER

- Super-Elastic Metal Retains Flexibility to Collapse

### CANINE

- Articular Surface Undisturbed
- Removable via Original Implant Access Site

### HUMAN

- Cancellous Bone is Compressible
- Successful Post Healing Removals



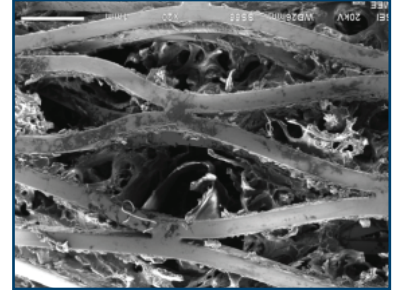
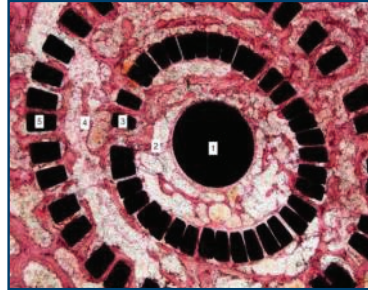
CONVENTUS  
ORTHOPAEDICS

conventusortho.com

# CONVENTUS PH CAGE™ – FULLY REMOVABLE

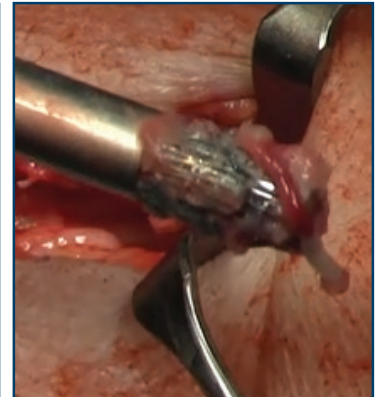
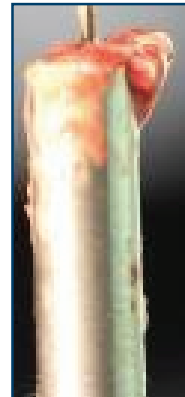
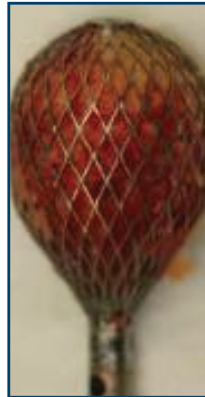
## cancellous Bone

- Approximately 25% Solid Material\*
- Highly Compressible\*
- Extrudes through Implant

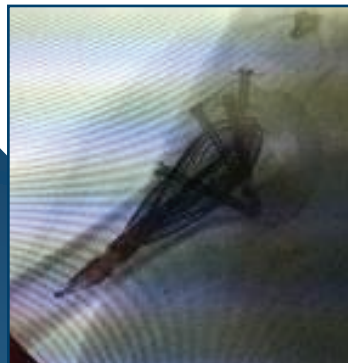


## Nitinol Implant

- Unlockable to Allow Compression
- Super-Elastic Metal Retains Flexibility to Collapse
- Removal via Original Implant Access Site

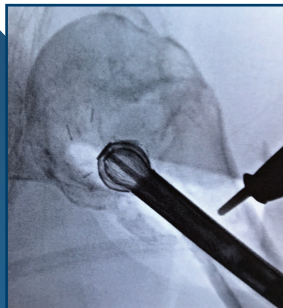
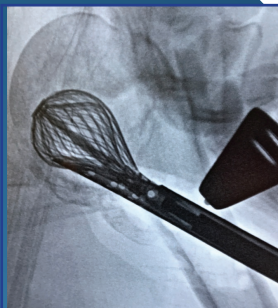


\* Reference: Wang (2010), *Fundamental Biomechanics in Bone Tissue Engineering*, Morgan & Claypool Publishers



## Removal Cases

- Procedure 35 Minutes
- Arthroplasty Implanted (Did Not Inhibit Revision)
- Female, Non-Compliant
- Four Months, Loss of Reduction



- Procedure 36 Minutes
- Elective Removal
- Complete Healing
- Infection at Five Months
- Packed with Osteoset - Resorbable Beads with Antibiotics



10200 73rd Ave. N., Suite 122, Maple Grove, MN 55369  
Office: 763-515-5000 US Customer Service: 855-41UNION (418-6466)  
conventusortho.com

Products listed may not be available in all markets.